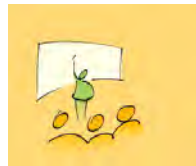


GEORGIA HEALTH POLICY CENTER

ALIGNING SYSTEMS FOR HEALTH RESEARCH & PRACTICE CONVENING

Zoom
Day 1, October 18th, 2021

Tom Benthin Graphic Facilitator



tombenthin.com

ALIGNING SYSTEMS FOR HEALTH

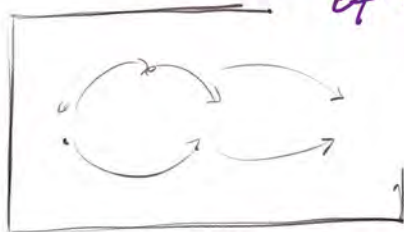
RESEARCH & PRACTICE CONVENING October 18 & 19, 2021

• OPENING

Share research...
→ Add community members!

CONTINUE OUR LEARNING
and
CELEBRATE

• The importance
of COMMUNITY ~.



from a DIFFUSE to a CONSOLIDATED understanding ~.

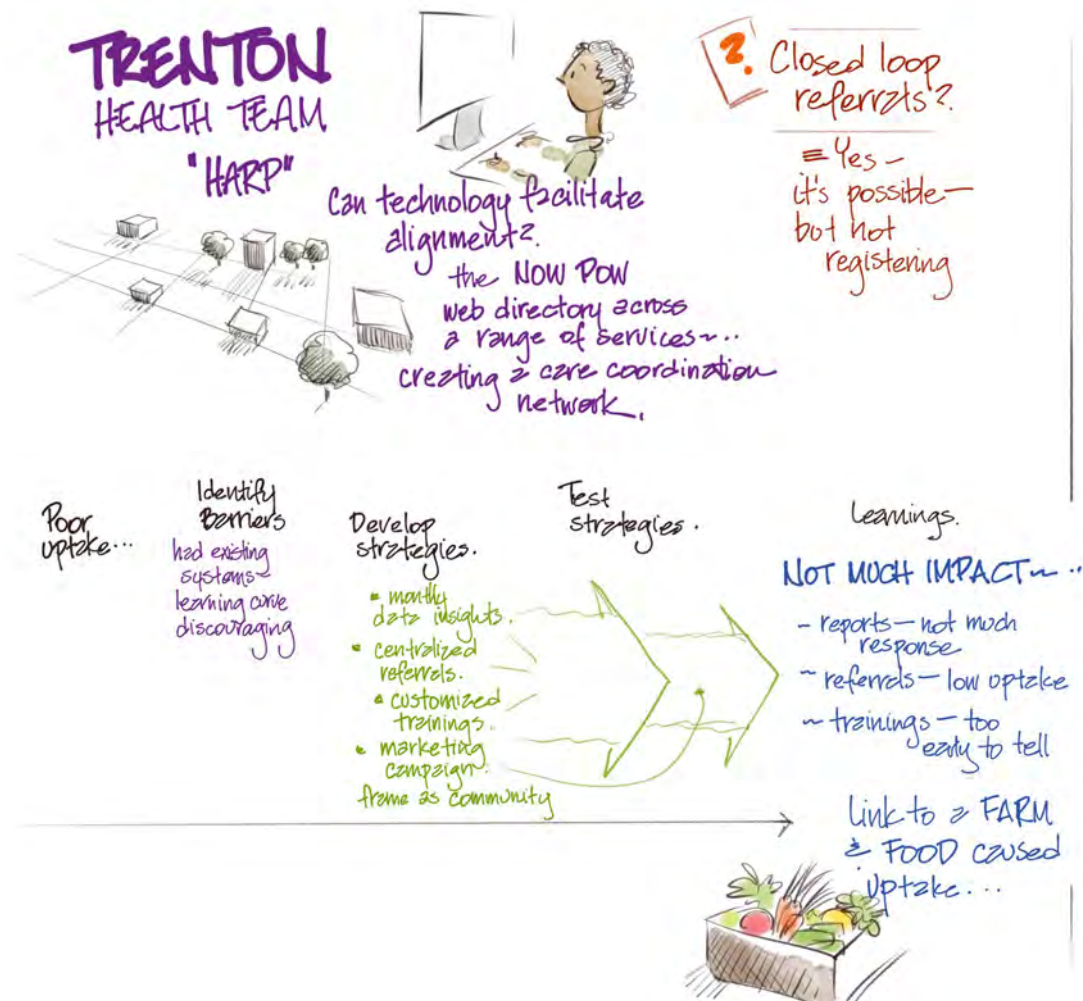
Aligning systems
should improve
health
ASSUMPTIONS.

LEARNING

structural
racism can
cause alignment
alone to make
things worse!

• Having an EVIDENCE BASE
is critical ~.

ALIGNING SYSTEMS FOR HEALTH RESEARCH & PRACTICE CONVENING October 18 & 19, 2021

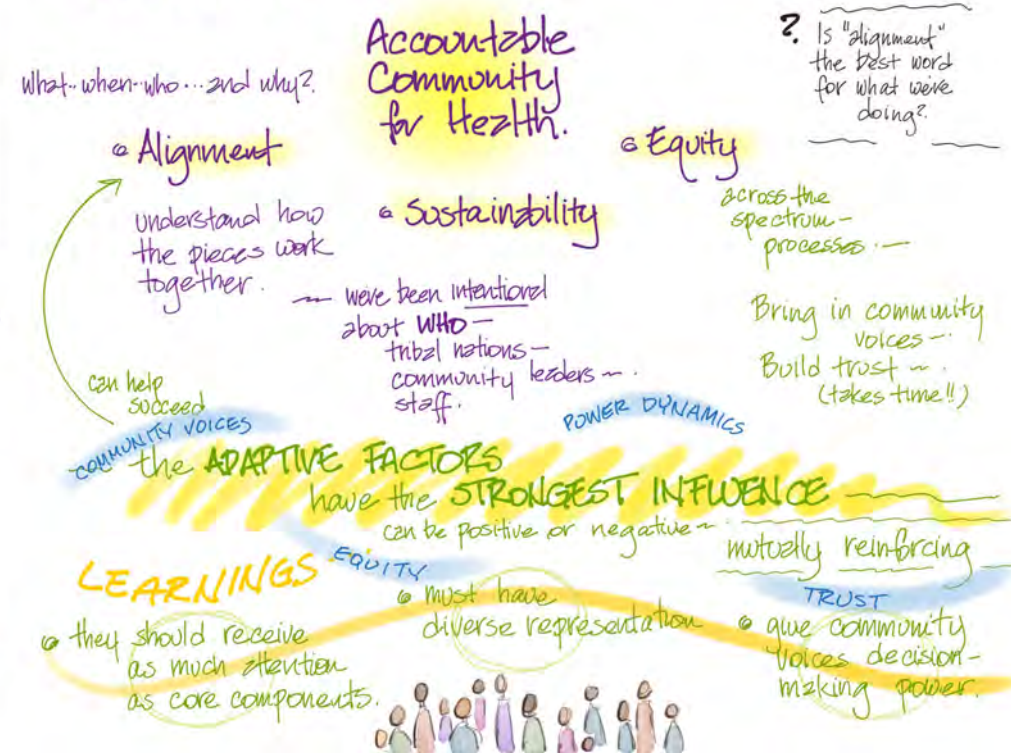


LEARNING FROM ALIGNING GRANTEES

PUBLIC HEALTH INSTITUTE

Population Health Innovation Lab

System-view with a focus on HEALTH.

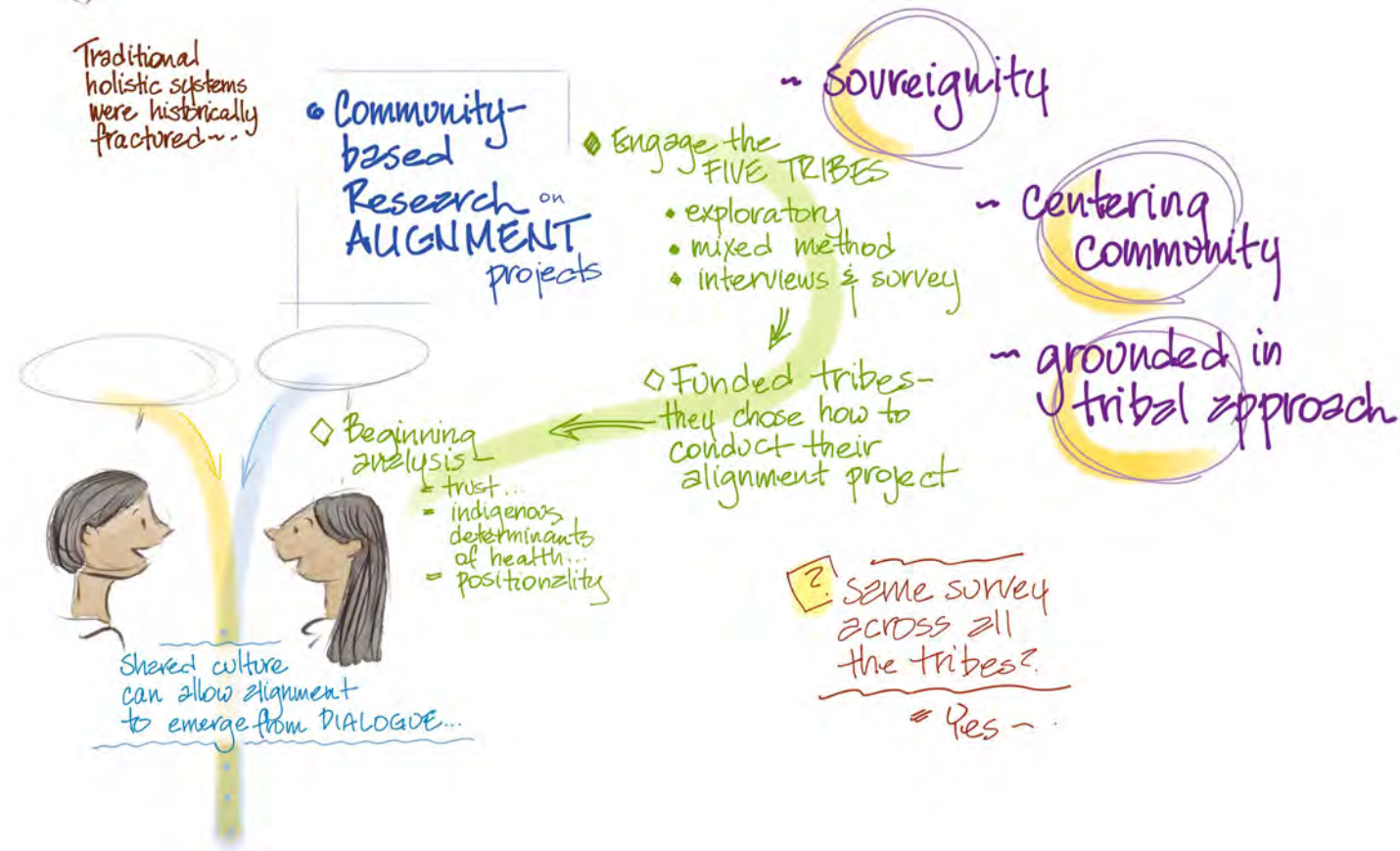


ALIGNING SYSTEMS FOR HEALTH

RESEARCH & PRACTICE CONVENING October 18 & 19, 2021

LEARNING FROM ALIGNING GRANTEES

SEVEN DIRECTIONS



ALIGNING SYSTEMS FOR HEALTH

RESEARCH & PRACTICE CONVENING October 18 & 19, 2021

BREAKOUT REPORT-OUTS

• The challenge of tokenism
actual co-designing

• How long does it take to build trust?
& expectations.

• The importance of seeing results for alignment

• Inspired by seeing community

~ there are many community voices ~

• Gentle, respectful approach—
impressed

• Valuing community members' time.
compensation ~

ALIGNING SYSTEMS FOR HEALTH

RESEARCH & PRACTICE CONVENING October 18 & 19, 2021



Community voice
& cross-sector
alignment ~

Our first theory of change
focused on community voice—
people wanted it more prominent

36 papers → coding → lots of ways
terms were
being used

expand our
definition of
"community voice"

ACTIVE

decision-
making power
& sustained
change

power dynamics
will shift...

passive

A range of
strategies

will take
more time
& trust

link to outcomes needed →

NOTHING
ABOUT US
WITHOUT
US!

ARCHI collaborative —
the Atlanta Transformation scenario —
how would it look on the ground?
would alignment deliver improvement?

We chose Tri-Cities: great need, disparate orgs, readiness, partners
... like a reverse snowball effect —
gets bigger but harder... ready to come together



Find the
community
champion

lots of the conversations
are BUILDING TRUST

the community led us to
OUR PROGRAM

Community
Health Workers.

program —
high school
students & grads

• Active
Listening
& repeating

Building
Trust

• Transparency

• Flexibility

• Lead from
Behind

• Pay your
People!

• Equity
is both a
process
and an outcome



Key
interviews.

leadership
group

develop
priorities.

5 YEAR PROCESS

focus
groups interviews

Social Isolation was HUGE

Have to be
TRANSPARENT...

... Don't OVER-PROMISE ...

Don't be EXTRACTIVE ...

close the feedback loops!

... Watch out for ASSESSMENT FATIGUE

... Value people's TIME & EXPERIENCE

... Watch out for SCOPE BLINDNESS ...

ALIGNING SYSTEMS FOR HEALTH

RESEARCH & PRACTICE CONVENING October 18 & 19, 2021

• ADVANCING OUR PRACTICE OF ENGAGING PEOPLE WITH LIVED EXPERIENCE

* tying my activities to their outcomes

* putting humans first

? Facilitating conflicts?

= Have to come from abundance & collective action — takes time & work working towards community

~ Being in community with the community ~

? Can we reimagine our work? Build in community?

= Projects initiated by communities — where we just support. Policy support important.

= Building up communities to sustain on their own — set expectations ~

• the community is our community

the drumbeat has gotten louder & louder...



* as the work grows it gets more complex

* not being extractive

* facilitating agency